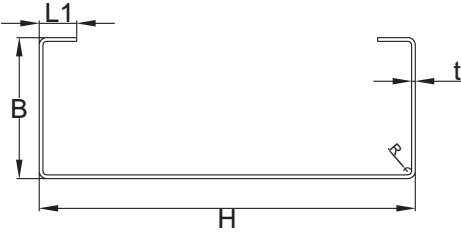


Cee Profil Kesit Özellikleri

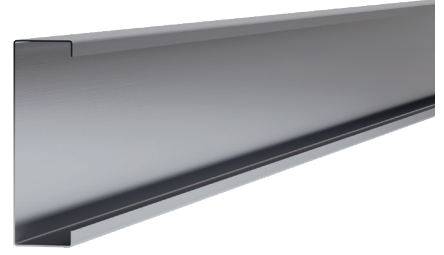
Cee Profile Section Properties



Galvanizli çelikten C şeklinde soğuk şekillendirilmiş olarak üretilen profillerdir.
Cold formed C-shape galvanised steel profiles.



H	63 - 300 mm
B	41 - 75 mm
L1	0 - 20 mm
t	0,75 - 2,50 mm
R	2,50 mm



Cee Profil Kod Cee Profile Code	H	B	t	L1	L2	Açılım Expansion	Ağırlık Weight	Alan F Area	I _x	W _x	r _x	I _y	W _y	r _y
	mm	mm	mm	mm	mm	mm	kg/m	(cm ²)	(cm ⁴)	(cm ³)	(cm)	(cm ⁴)	(cm ³)	(cm)
GPC.063.60.10	63	60	1,0	13	-	200	1,60	2,00	14,47	4,59	2,68	10,01	2,82	2,23
GPC.063.60.15	63	60	1,5	15	-	200	2,40	3,00	21,01	6,67	2,64	14,99	4,30	2,23
GPC.063.60.20	63	60	2,0	17	-	200	3,20	4,00	27,07	8,59	2,59	19,91	5,83	2,23
GPC.075.55.10	75	55	1,0	12	-	200	1,60	2,00	19,83	5,29	3,14	8,42	2,46	2,04
GPC.075.55.15	75	55	1,5	14	-	200	2,40	3,00	28,96	3,74	3,10	12,65	7,72	2,05
GPC.075.55.20	75	55	2,0	16	-	200	3,20	4,00	37,50	10,00	3,05	16,85	5,07	2,05
GPC.090.45.10	90	45	1,0	8	-	188	1,50	1,88	26,53	5,89	3,64	6,01	1,99	1,73
GPC.090.45.15	90	45	1,5	10	-	188	2,26	2,82	38,83	9,05	3,60	8,62	3,05	1,74
GPC.090.50.10	90	50	1,0	10	-	200	1,60	2,00	26,53	5,89	3,64	6,01	1,99	1,73
GPC.090.50.15	90	50	1,5	12	-	200	2,39	2,99	38,83	9,05	3,60	8,62	3,05	1,74
GPC.090.46.10	90	46	1,0	13	-	200	1,60	2,00	26,53	5,89	3,64	6,01	1,99	1,73
GPC.090.46.15	90	46	1,5	15	-	200	2,40	3,00	38,83	9,05	3,60	8,62	3,05	1,74
GPC.090.46.20	90	46	2,0	17	-	200	3,20	4,00	50,42	11,20	3,56	12,04	4,12	1,74
GPC.100.44.10	100	44	1,0	10	-	200	1,60	2,00	31,92	6,38	3,99	5,09	1,66	1,59
GPC.100.44.15	100	44	1,5	12	-	200	2,40	3,00	46,94	9,39	3,96	7,69	2,56	1,60
GPC.100.48.20	100	48	2,0	10	-	200	3,20	4,00	61,24	12,24	3,92	10,30	3,48	1,60
GPC.100.54.10	100	54	1,0	20	-	240	1,92	2,40	39,29	7,86	4,08	10,80	3,21	2,12
GPC.100.56.15	100	56	1,5	20	-	240	2,88	3,60	58,46	11,69	4,03	16,88	4,85	2,16
GPC.100.58.20	100	58	2,0	20	-	240	3,84	4,80	77,30	15,46	4,02	23,39	6,49	2,21
GPC.140.45.10	140	45	1,0	9	-	240	1,92	2,40	69,00	9,86	5,38	5,74	1,71	1,55
GPC.140.46.15	140	46	1,5	10	-	240	2,88	3,60	102,86	14,69	5,64	5,37	2,54	1,56
GPC.140.46.20	140	46	2,0	12	-	240	3,84	4,80	134,26	19,18	5,34	11,13	3,25	1,38
GPC.150.41.10	150	41	1,0	8	-	240	1,92	2,40	77,09	10,28	5,67	4,45	1,40	1,36
GPC.150.41.15	150	41	1,5	10	-	240	2,88	3,60	114,35	15,24	5,64	6,78	2,17	1,37
GPC.150.41.20	150	41	2,0	12	-	240	3,84	4,80	150,75	20,08	5,60	9,15	2,98	1,38
GPC.150.65.15	150	65	1,5	16	-	300	3,60	4,50	160,97	21,46	5,98	25,43	5,65	2,37
GPC.150.65.20	150	68	2,0	15	-	300	4,80	6,00	160,97	21,46	5,98	25,43	5,65	2,37
GPC.200.42.15	200	42	1,5	14	-	300	3,60	4,50	242,05	24,20	7,34	9,00	2,76	1,41
GPC.200.75.20	200	75	2,0	20	-	374	5,98	7,48	459,65	45,96	7,85	55,19	10,39	2,71
GPC.200.75.25	200	75	2,5	20	-	370	7,40	9,25	566,90	56,69	7,81	67,31	12,66	2,69
GPC.250.75.15	250	75	1,5	20	-	428	5,14	6,42	589,30	47,14	9,61	45,37	8,16	2,67
GPC.250.64.20	250	64	2,0	20	-	400	6,40	8,00	776,49	62,12	9,57	59,03	10,62	2,64
GPC.250.75.25	250	75	2,5	20	-	420	8,40	10,50	952,37	76,19	9,53	71,23	12,79	2,60
GPC.300.75.20	300	75	2,0	20	-	474	7,58	9,48	1199,24	79,95	11,25	62,06	10,79	2,56
GPC.300.75.25	300	75	2,5	20	-	470	9,40	11,75	1473,25	98,22	11,20	74,89	13,00	2,53