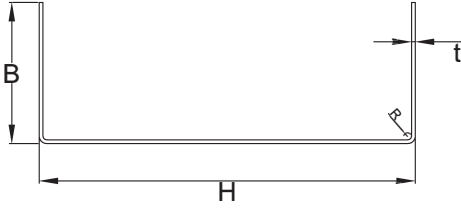


# U Profil Kesit Özellikleri

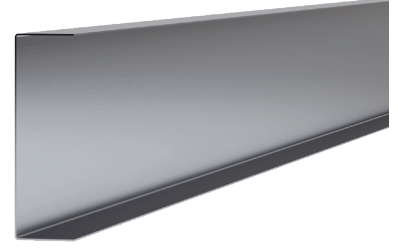
## U Profile Section Properties



Galvanizli çelikten U şeklinde soğuk şekillendirilmiş olarak üretilen profillerdir.  
Cold formed U-shape galvanised steel profiles.



|    |                |
|----|----------------|
| H  | 63 - 300 mm    |
| B  | 41 - 75 mm     |
| L1 | 0 - 20 mm      |
| t  | 0,75 - 2,50 mm |
| R  | 2,50 mm        |



| U Profil Kod<br>U Profile Code | H   | B  | t   | L1 | L2 | Açılım<br>Expansion | Ağırlık<br>Weight | Alan F<br>Area     | I <sub>x</sub>     | W <sub>x</sub>     | r <sub>x</sub> | I <sub>y</sub>     | W <sub>y</sub>     | r <sub>y</sub> |
|--------------------------------|-----|----|-----|----|----|---------------------|-------------------|--------------------|--------------------|--------------------|----------------|--------------------|--------------------|----------------|
|                                | mm  | mm | mm  | mm | mm | mm                  | kg/m              | (cm <sup>2</sup> ) | (cm <sup>4</sup> ) | (cm <sup>3</sup> ) | (cm)           | (cm <sup>4</sup> ) | (cm <sup>3</sup> ) | (cm)           |
| GPU.063.70.10                  | 63  | 70 | 1,0 | 0  | -  | 199                 | 1,59              | 1,99               | 14,47              | 4,59               | 2,68           | 10,01              | 2,82               | 2,23           |
| GPC.063.71.15                  | 63  | 71 | 1,5 | 0  | -  | 199                 | 2,39              | 2,99               | 21,75              | 6,90               | 2,73           | 14,90              | 3,22               | 2,26           |
| GPC.063.72.20                  | 63  | 72 | 2,0 | 0  | -  | 199                 | 3,18              | 3,98               | 29,20              | 9,27               | 2,71           | 21,26              | 4,57               | 2,32           |
| GPU.075.64.10                  | 75  | 64 | 1,0 | 0  | -  | 199                 | 1,59              | 1,99               | 20,16              | 5,37               | 3,20           | 8,48               | 1,94               | 2,07           |
| GPU.075.65.15                  | 75  | 65 | 1,5 | 0  | -  | 199                 | 2,39              | 2,99               | 29,85              | 7,96               | 3,18           | 12,98              | 2,88               | 2,09           |
| GPU.075.66.20                  | 75  | 66 | 2,0 | 0  | -  | 199                 | 3,18              | 3,98               | 38,19              | 10,18              | 3,15           | 16,22              | 3,67               | 2,05           |
| GPU.090.57.10                  | 90  | 57 | 1,0 | 0  | -  | 200                 | 1,60              | 2,00               | 27,38              | 6,09               | 3,72           | 6,57               | 1,60               | 1,82           |
| GPU.090.58.15                  | 90  | 58 | 1,5 | 0  | -  | 200                 | 2,40              | 3,00               | 40,63              | 9,02               | 3,70           | 10,12              | 2,45               | 1,84           |
| GPU.090.59.20                  | 90  | 59 | 2,0 | 0  | -  | 200                 | 3,20              | 4,00               | 52,81              | 11,73              | 3,67           | 13,17              | 3,13               | 1,83           |
| GPU.100.52.10                  | 100 | 52 | 1,0 | 0  | -  | 200                 | 1,60              | 2,00               | 35,68              | 7,13               | 4,10           | 7,47               | 1,74               | 1,89           |
| GPU.100.53.15                  | 100 | 53 | 1,5 | 0  | -  | 200                 | 2,40              | 3,00               | 48,21              | 9,64               | 4,02           | 8,15               | 2,08               | 1,65           |
| GPU.100.54.20                  | 100 | 54 | 2,0 | 0  | -  | 200                 | 3,20              | 4,00               | 62,32              | 12,46              | 3,99           | 10,59              | 2,67               | 1,64           |
| GPU.100.72.10                  | 100 | 72 | 1,0 | 0  | -  | 240                 | 1,92              | 2,40               | 43,03              | 8,60               | 4,21           | 13,92              | 2,68               | 2,40           |
| GPU.100.73.15                  | 100 | 73 | 1,5 | 0  | -  | 240                 | 2,88              | 3,60               | 62,46              | 12,49              | 4,18           | 19,78              | 3,88               | 2,36           |
| GPU.100.74.20                  | 100 | 74 | 2,0 | 0  | -  | 240                 | 3,84              | 4,80               | 82,48              | 16,49              | 4,16           | 26,88              | 5,14               | 2,38           |
| GPU.140.52.10                  | 140 | 52 | 1,0 | 0  | -  | 240                 | 1,92              | 2,40               | 70,98              | 10,14              | 5,44           | 6,14               | 1,51               | 1,60           |
| GPU.140.53.15                  | 140 | 53 | 1,5 | 0  | -  | 240                 | 2,88              | 3,60               | 103,68             | 14,81              | 5,40           | 8,78               | 2,11               | 1,57           |
| GPU.140.54.20                  | 140 | 54 | 2,0 | 0  | -  | 240                 | 3,84              | 4,80               | 136,36             | 19,48              | 5,31           | 11,76              | 2,80               | 1,59           |
| GPU.150.47.10                  | 150 | 47 | 1,0 | 0  | -  | 240                 | 1,92              | 2,40               | 76,79              | 10,23              | 5,68           | 4,44               | 1,18               | 1,37           |
| GPU.150.48.15                  | 150 | 48 | 1,5 | 0  | -  | 240                 | 2,88              | 3,60               | 113,68             | 15,16              | 5,66           | 7,72               | 1,75               | 1,38           |
| GPU.150.49.20                  | 150 | 49 | 2,0 | 0  | -  | 240                 | 3,84              | 4,80               | 149,56             | 19,94              | 5,63           | 9,01               | 2,30               | 1,38           |
| GPU.200.53.15                  | 200 | 53 | 1,5 | 0  | -  | 300                 | 3,60              | 4,50               | 248,50             | 24,85              | 7,42           | 10,71              | 2,37               | 1,54           |
| GPU.200.54.20                  | 200 | 54 | 2,0 | 0  | -  | 300                 | 4,80              | 6,00               | 312,26             | 31,22              | 7,32           | 11,54              | 2,69               | 1,40           |
| GPU.200.55.25                  | 200 | 55 | 2,5 | 0  | -  | 300                 | 6,00              | 7,50               | 391,02             | 39,10              | 7,31           | 15,36              | 3,48               | 1,45           |
| GPU.200.75.25                  | 200 | 75 | 2,5 | 0  | -  | 340                 | 6,80              | 8,50               | 504,23             | 50,42              | 7,71           | 42,99              | 7,27               | 2,24           |
| GPU.250.75.20                  | 250 | 75 | 2,0 | 0  | -  | 392                 | 6,27              | 7,84               | 682,73             | 54,61              | 9,39           | 35,53              | 5,86               | 2,14           |
| GPU.250.75.25                  | 250 | 75 | 2,5 | 0  | -  | 390                 | 7,80              | 9,75               | 841,93             | 67,35              | 9,35           | 42,95              | 7,07               | 2,11           |
| GPU.300.75.20                  | 300 | 75 | 2,0 | 0  | -  | 442                 | 7,07              | 8,84               | 1308,86            | 87,26              | 10,97          | 44,83              | 7,21               | 2,03           |
| GPU.300.75.25                  | 300 | 75 | 2,5 | 0  | -  | 440                 | 8,80              | 11,00              | 1341,06            | 89,40              | 11,02          | 50,32              | 8,20               | 2,13           |

- Hesaplarda kullanılan malzemenin karakteristik akma dayanımı, 235 N/mm<sup>2</sup>'dir. Diğer kalitede hammaddelerin tabloları ve farklı çelik sınıfları için lütfen Teknik Ofisimize irtibata geçiniz.  
The yield strength of the raw material used in general calculation is 235 N/mm<sup>2</sup>. For variety, please consult to our Technical team.
- Efektif kesit hesapları TSEN 1993-1-3, Eurocode 3, AISI S100-2007 "North American Standards for the Design of Cold Formed Steel Structural Members" şartnamesi kullanılarak yapılmıştır.  
Effective section calculations are in accordance with TS EN 1993-1-3, Eurocode 3, AISI S100-2007 "North American Standards for the Design of Cold Formed Steel Structural Members" specifications.
- Tablolardaki ölçülerden genel kullanım alanı bulunan profiller düşünülerek değerlendirilmiştir. Diğer ölçülerde tedarik ve teknik destek için lütfen ilgili departmanımızla irtibata geçiniz.  
The dimensions given in the tables are evaluated regarding the profiles in general use. For other sizes, please consult to our Technical team.
- Efektif kesit hesapları; kesitin pozitif moment etkisinde, basit eğilme altında olduğu durumu ifade etmektedir.  
Effective section calculations refers to simple bending at positive moment.